

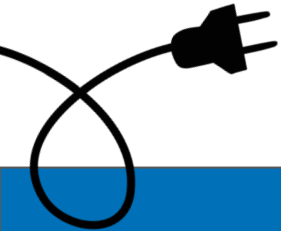


**ALLIANCE FOR  
AFFORDABLE  
ENERGY**



# Entergy's Meta -pocalypse

May 2026



# Data Center Context



**August 20, 2025:** LPSC approves Entergy/Meta 1.0 deal

**August 20, 2025:** Meta sells 80% of Louisiana Data Center to Blue Owl

**Late 2025:** Meta's Auditor flags Hyperion/Blue Owl sale as "critical audit matter"

December 2025: Anthropic announces \$10B data center in

**March 2026:** Meta walks away from \$80 Billion Meta-verse after 5 years

**March 2026:** OpenAI shuts down SORA video product & ends Billion dollar deal with Disney.

**March 2026:** Entergy applies for 7 new gas plants to serve Meta

**March 2026:** Swepco and Amazon announce three new centers in Shreveport.

**April 2026:** Maine Legislature votes to ban new Data Centers for 18 months.

**April 2026:** Report: HALF of planned US data centers delayed/cancelled

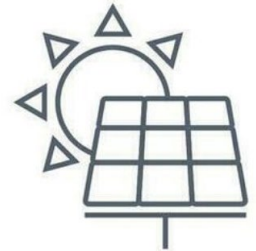
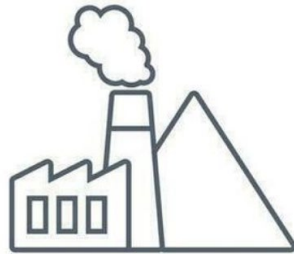
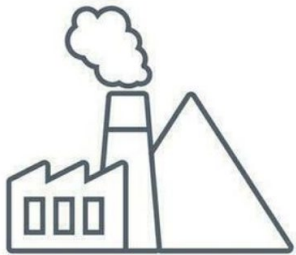
# Entergy and Meta:

A match made in Louisiana

Entergy's first ask: 3 gas plants + 1,500 MW solar + \$550M Tx

**~\$3.2 Billion**

**APPROVED in 10 months**



# Entergy and Meta:

A match made in Louisiana

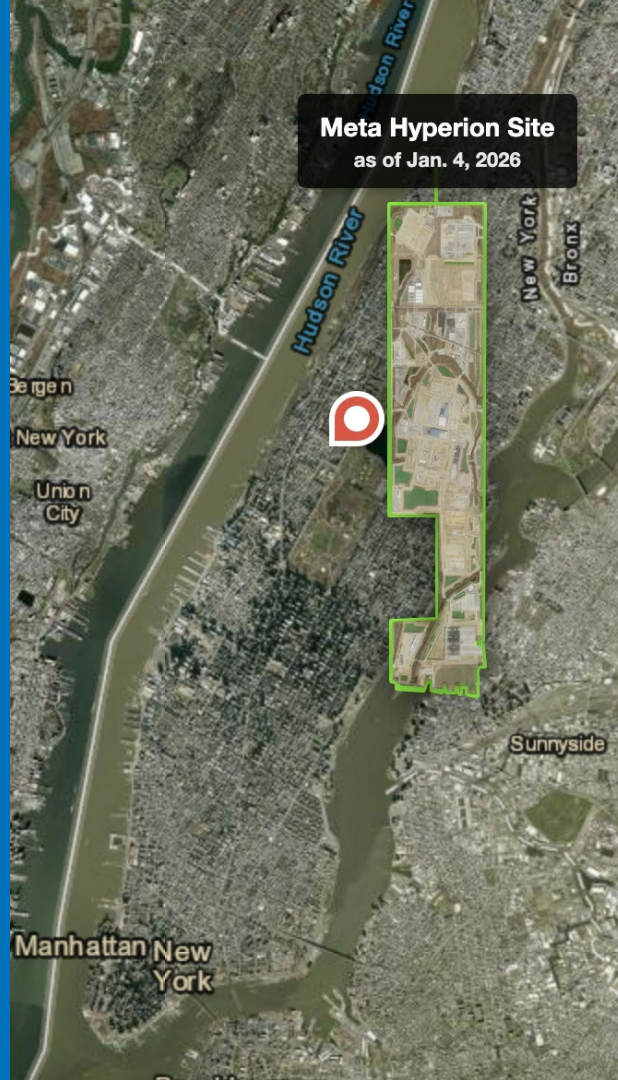
Entergy's NEW ask: 7 gas plants + 2,500 MW solar + 600 MW battery

**Wants approval in <8 months**

**Billions**



**Hyperion is  
nearly the  
size of  
Manhattan.  
(not including  
the gas plants)**



# Current Entergy LA vs TOTAL for META

**Current Generation = 10,927  
MW**

**Current Gas Generation = 8,731 MW**

**Meta Gas Plants =  
7,540 MW**

## Top Louisiana Emitters

CF Industries  
Donaldsonville = 8.69 mt/ CO<sub>2</sub>e

Plaquemine LNG = 8.16 mt/ CO<sub>2</sub>e

Brame Energy  
Center = 7.012 mt/ CO<sub>2</sub>e

Meta gas plants will cause

**~26 Million  
Tons CO<sub>2</sub>e**

Westlake : 1 Gas Plant

**\$1.7B (\$7.30 bill impact on 1000 kWh)**

*Does not include additional transmission + interconnection costs*

Waterford: 1 Gas Plant

**\$1.7B (\$7.06 bill impact on 1000 kWh)**

*Does not include additional transmission + interconnection costs*

Waterford 3: Nuke Uprate

**\$ 68.7M (\$0.13 bill impact on 1000 kWh)**

River Bend: Cash Grab

**\$1.1B recovery (\$1.40 bill impact on 1000 kWh)**

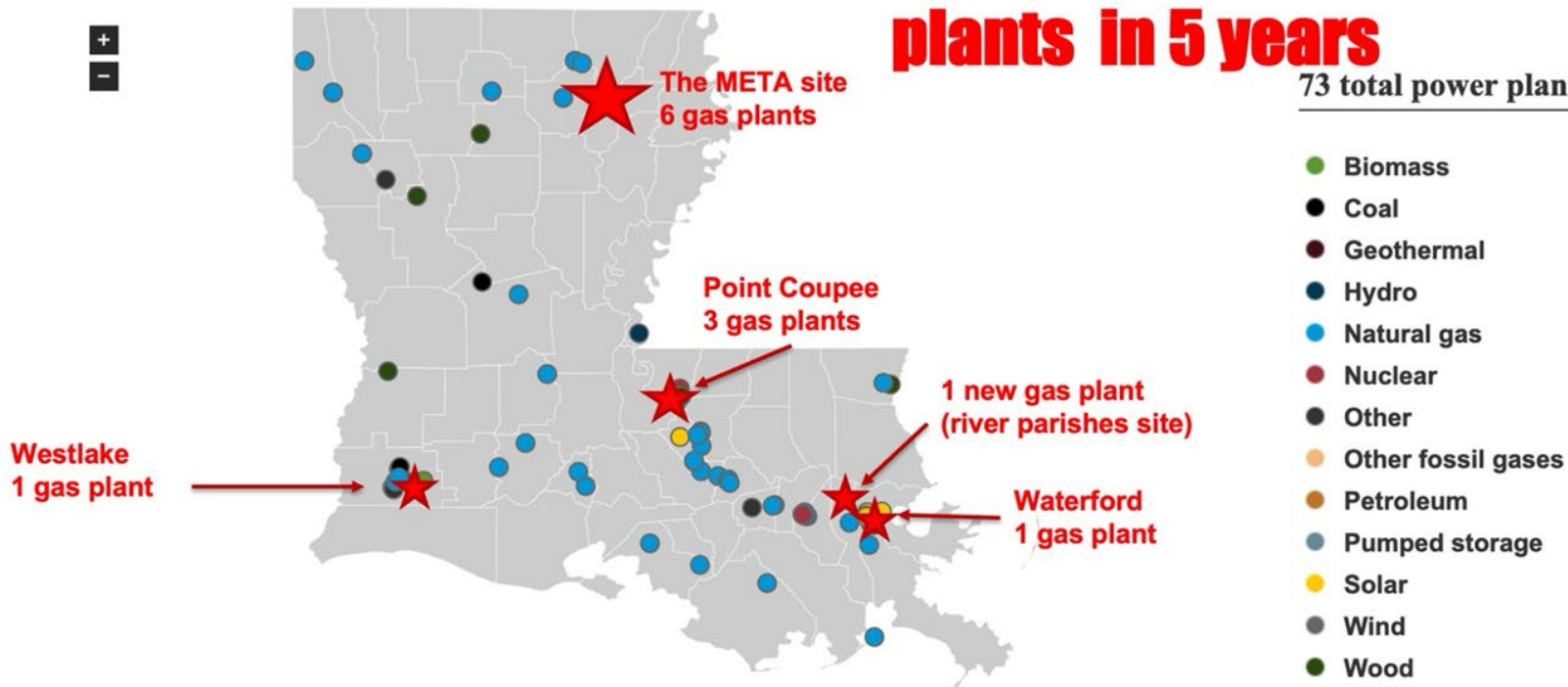
**What  
ELSE does  
Entergy  
Want?**

# POWER GENERATION

## 12 new gas plants in 5 years

Number of plants for all fuels, Louisiana, all sectors

73 total power plants



# Promises

vs.

# Risks

## “\$2B in savings”

ELL + Meta \$3M per year for 30 years

The rest is at risk revenues against  
basic costs.

## 4000 MW of Renewables

ELL has had approval for 3000 GW for  
almost 2 years and has only 271 MW to  
show for it.

## \$24 Billion in Risk

40 years of gas operation

## 26 Mil Tons CO<sub>2</sub>e /year

+ water use + local PM pollution, etc

There's also ITEP, tax rebates, PILOT...

With little accountability for jobs